

SOURCE ROCK EVALUATION OF ALINYA FORMATION, GILES-1

1. DATA SUMMARY AND PRELIMINARY INTERPRETATION

Report for South Australian Department of Mines and Energy

by

DAVID M. McKIRDY

Organic Geochemistry Laboratory

Department of Geology and Geophysics

University of Adelaide

September 1993

Microfossils and molecular fossils from the Neoproterozoic Alinya Formation – a possible new source rock in the eastern Officer Basin

Wenlong Zang¹ and David M. McKirdy²

¹ South Australian Department of Mines and Energy, P.O. Box 151, Eastwood, SA 5063

² Department of Geology and Geophysics, The University of Adelaide, SA 5005

The Alinya Formation, a subtidal shelf to coastal sabkha deposit comprising anhydritic shale and siltstone with minor sandstone, dolomite, limestone and chert, conformably overlies the aeolian Pindyin Sandstone in the northeastern Officer Basin. Prior to the drilling of Giles-1, this Neoproterozoic sequence was recognised only in sporadic, deeply weathered outcrop along the southern margin of the Musgrave Block. Seismic interpretation indicates that the Alinya Formation extends across the Munyarai Trough and onto the Murnaroo Platform where its evaporites have been remobilised into diapirs and other salt-related structures. The unit is 230 m thick at its North Pindyin Hills type section and 57.3 m thick in Giles-1. A north-trending basement high, the Nurrui Ridge, appears to have acted as a sill that isolated a saline embayment in the east from the open ocean to the west (Zang and Major, 1993).

Grey-green shales and red-brown siltstones of the upper Alinya Formation in Giles-1 contain a diverse array of microfossils, including benthic cyanobacteria (notably *Eoentophysalis* mats) and abundant phytoplankton (spheroidal and spinose acritarchs). The acritarch assemblage is dominated by spheroids such as *Leiosphaeridia*, *Lophosphaeridium*, *Paracrassosphaera*, *Synsphaeridium*, *Strictosphaeridium*, *Satka*, *Tasmanites*, *Simia*, *Sinianella*, *Sphaerocongregus*, *Valeria* and *Caudosphaera*. Distinctive spinose elements include *Trachyhystricosphaera vidalii*, *T. aimica*, *Trachyhystricosphaera* sp., *Cymatiosphaeroides kullingii*, *Vandalosphaeridium* sp. and *Micrhystridium* sp. which together indicate an early Neoproterozoic age. The vase-shaped *Melanocyrrillium* and the octahedral species *Octoedryxium intrarium* are also present. Many (but not all) of these microfossils have previously been described from the Gillen Member (Bitter Springs Formation) in the Amadeus Basin (Zang and Walter, 1992). Biostratigraphic correlation of the lower Bitter Springs and Alinya Formations accords with the fact that both overlie the basal sandstone blanket (Heavitree Quartzite equivalent to Pindyin Sandstone) of the Centralian Superbasin and each is part of a transgressive systems tract.

The Alinya Formation intersected by Giles-1 can be divided into two units. The lower unit, anhydritic red-brown siltstone thinly interbedded with sandstone, was probably deposited on an intertidal flat. The upper unit consists of several upward-shallowing evaporite cycles deposited in a marine sabkha setting. A typical cycle comprises in turn grey siltstone; black shale; grey-green shale or siltstone; red-brown anhydrite, siltstone and dolomite rich in *Eoentophysalis* mats; and aeolian sandstone with minor anhydrite and halite. The enhanced preservation of microbial organic matter in the 35 m-thick upper unit makes it of interest as a possible source rock for petroleum. Preliminary analysis of six core samples from 1237–1266 m depth in Giles-1 revealed poor to fair organic richness (TOC = 0.10–0.62%), low concentrations of extractable organic matter (EOM = 6–15 ppm) and low hydrocarbon yields (4–15 mg/g TOC). Rock-Eval pyrolysis confirmed the presence of mature gas-prone kerogen ($T_{\max} = 439\text{--}445^{\circ}\text{C}$; hydrogen index = 58–106). Similar organic geochemical characteristics have been reported for the Gillen Member (McKirdy, 1977; Jackson et al., 1984; Summons and Powell, 1991). For the upper Alinya Formation at Giles-1, maturation levels corresponding to the oil-generation window are indicated by sterane epimer ratios ($C_{29} \alpha\alpha\alpha 20S/20S+20R = 0.48\text{--}0.54$) and the isomer distributions of diaromatic and triaromatic hydrocarbons (e.g. dimethylnaphthalene ratio, DNR-1 = 1.5; methylphenanthrene ratio, MPR = 1.0–1.3).

GC and GC-MS analysis of saturated hydrocarbons in the evaporitic sediments of the upper Alinya Formation identified a diverse suite of steranes, triterpanes and acyclic isoprenoid alkanes. Features of these molecular fossil distributions are: pristane/*n*-heptadecane = 0.32–0.40; phytane/*n*-octadecane =

0.16–0.19; pristane/phytane = 1.6–2.0; $17\alpha(\text{H})$ -30-norhopane > $17\alpha(\text{H})$ -hopane; 29,30-bisnorhopane > 28,30-bisnorhopane; 2 α -methyl hopanes; C_{27} – C_{30} desmethyl steranes in which cholestane (C_{27}) and 24-ethylcholestane (C_{29}) are co-dominant; and C_{30} 4-methyl steranes including dinosterane. The concentration of diasteranes is low relative to the regular steranes (diasterane/sterane = 0.2–0.6) and steranes are more abundant than hopanes (C_{30} hopane/ C_{29} sterane = 0.4–0.5). An almost identical biomarker assemblage has been described from gypsiferous dolomite of the Gillen Member in Alice Springs-3 (Summons and Walter, 1990; Summons and Powell, 1991). Many of these biomarkers are commonly found in Phanerozoic marine carbonates and evaporites where they are consistent with inputs from eukaryotic algae and eubacteria. The occurrence of dinosterane, a marine dinoflagellate marker, in Proterozoic sediments remains problematical.

Reservoir facies of the underlying Pindyin Sandstone (5–20% porosity) and overlying Tarlina Sandstone (5–15% porosity) are well placed to receive any hydrocarbons expelled from source beds within the Alinya Formation. The upper reservoir unit is sealed by the Giles Mudstone, making this early Neoproterozoic sequence a target for petroleum exploration, particularly along the northern margin of the Murnaroo Platform where halokinesis has produced a great variety of potential traps. Organic-rich Neoproterozoic siliciclastics and carbonates are source rocks for commercial oil and gas accumulations in eastern Siberia, Oman and southern China (McKirdy and Imbus, 1992).

References

- Jackson, K.S., McKirdy, D.M. and Deckelman, J.A., 1984. Hydrocarbon generation in the Amadeus Basin, central Australia. *APEA Journal*, **24**(1), 42–65.
- McKirdy, D.M., 1977. The diagenesis of microbial organic matter: a geochemical classification and its use in evaluating the hydrocarbon-generating potential of Proterozoic and Lower Palaeozoic sediments, Amadeus Basin, central Australia. *Ph.D. Thesis, Australian National University* (unpublished).
- McKirdy, D.M. and Imbus, S.W., 1992. Precambrian petroleum: a decade of changing perceptions. In: Schidlowski, M., Kimberley, M.M., Golubic, S., McKirdy, D.M. and Trudinger, P.A. (eds), *Early Organic Evolution: Implications for Mineral and Energy Resources*. Springer-Verlag, Berlin, pp. 176–192.
- Summons, R.E. and Powell, T.G., 1991. Petroleum source rocks of the Amadeus Basin. In: Korsch, R.J. and Kennard, J.M. (eds), *Geological and geophysical studies in the Amadeus Basin, central Australia*. *Bureau of Mineral Resources, Australia, Bulletin*, **236**, 511–524.
- Summons, R.E. and Walter, M.R., 1990. Molecular fossils and microfossils of prokaryotes and protists from Proterozoic sediments. *American Journal of Science*, **290-A**, 212–244.
- Zang, Wenlong and Major, R.B., 1993. Early Neoproterozoic succession in the central and northeastern Officer Basin, South Australia: lithology and acritarch biostratigraphy. *South Australian Department of Mines and Energy Report Book* (in preparation).
- Zang, Wenlong and Walter, M.R., 1992. Late Proterozoic and Cambrian microfossils and biostratigraphy, Amadeus Basin, central Australia. *Association of Australasian Palaeontologists Memoir* **12**, 132 p.

Env. 8591.

15/1/97

0150

Dear Dave, Here is the info. you asked for

TABLE 1

Cheers, David.

AMDEL CORE SERVICES

Rock-Eval Pyrolysis

21/04/93

Client: The University of Adelaide - Dr D McKirdy

Well: ~~Unspecified~~ ^{Giles-1}

Sample No.	T Max	S1	S2	S3	S1+S2	PI	S2/S3	PC	TOC	HI	OI
1237.9									0.14		
1239.8									0.10		
1242.8									0.25		
1256.0	475 (?)	0.03	0.23	0.03	0.26	0.12	7.67	0.02	0.40	58	8
1265.5	439	0.10	0.37	0.00	0.47	0.21	0.00	0.04	0.62	60	0
1243	445	0.25	0.66	0.18	0.91	0.29	3.67	0.07	0.62	106	29

ALINYA FORMATION SOURCE ROCK DATA*

	TOC	EOM		Kerogen	
	%	ppm	Hydrogen Index	H/C	Type
Range	0.10 - 0.62	6 - 15	58 - 106	n.d.	III
Mean	0.36	10	75		
n	6	5	3		

* Data from Giles - 1

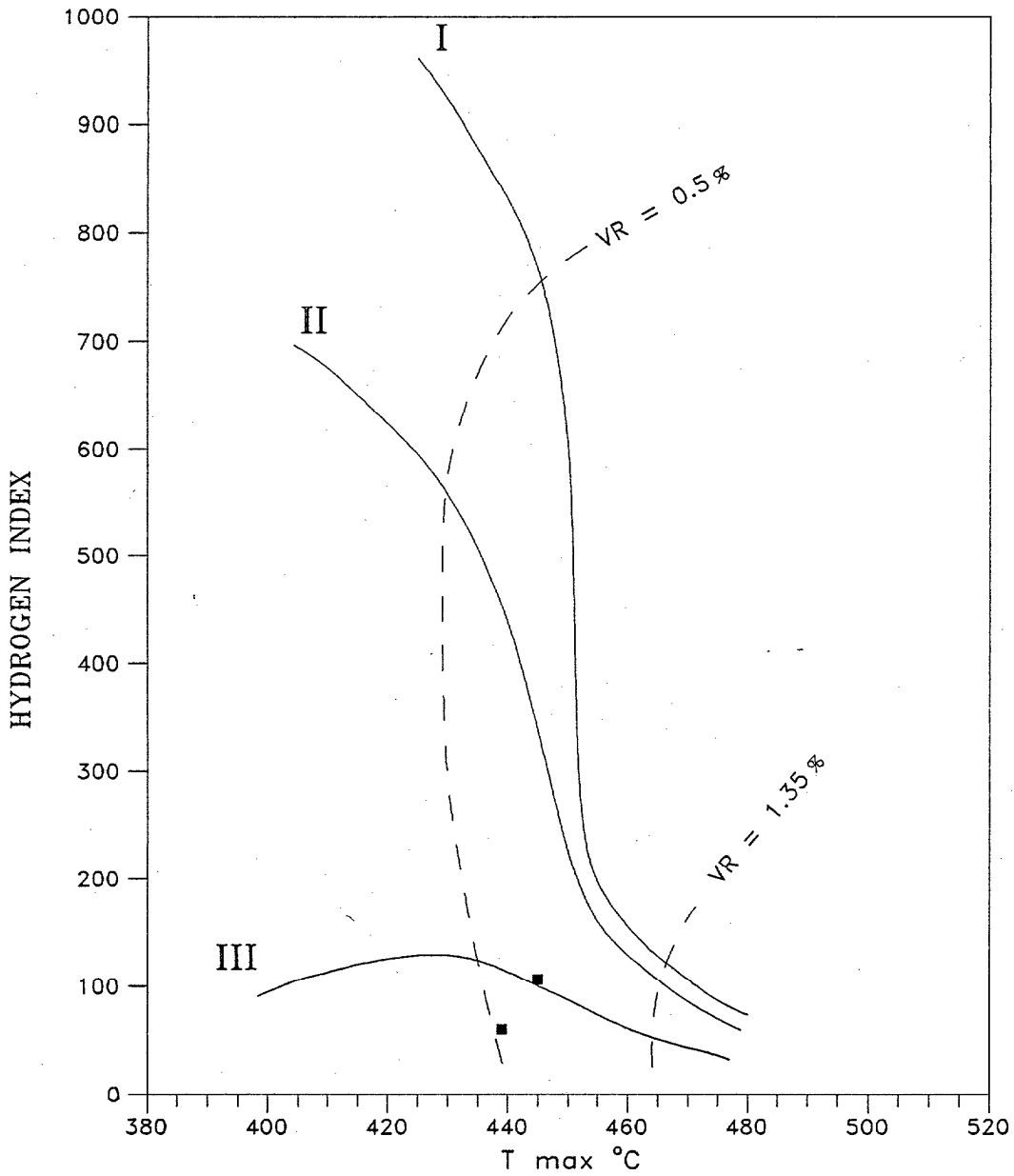
ALINYA FORMATION MATURITY

Well	T max °C	PI	MPR	VR calc %
Giles - 1	439 - 445	0.21 - 0.29	1.04 - 1.27	1.04 - 1.12

MATURE
Murnaroo Platform

HYDROGEN INDEX vs T max

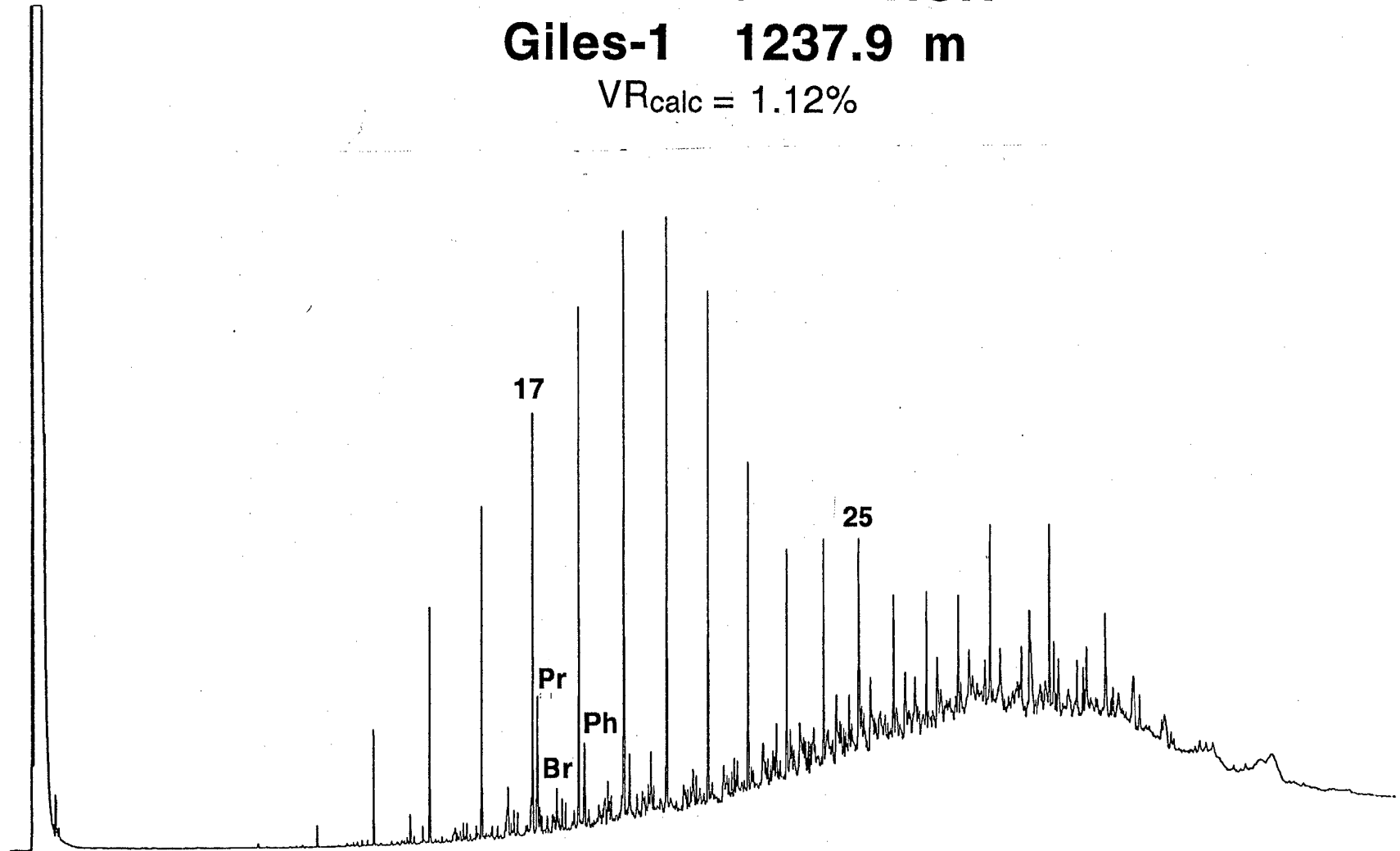
ALINYA FORMATION



ALINYA FORMATION

Giles-1 1237.9 m

$VR_{\text{calc}} = 1.12\%$

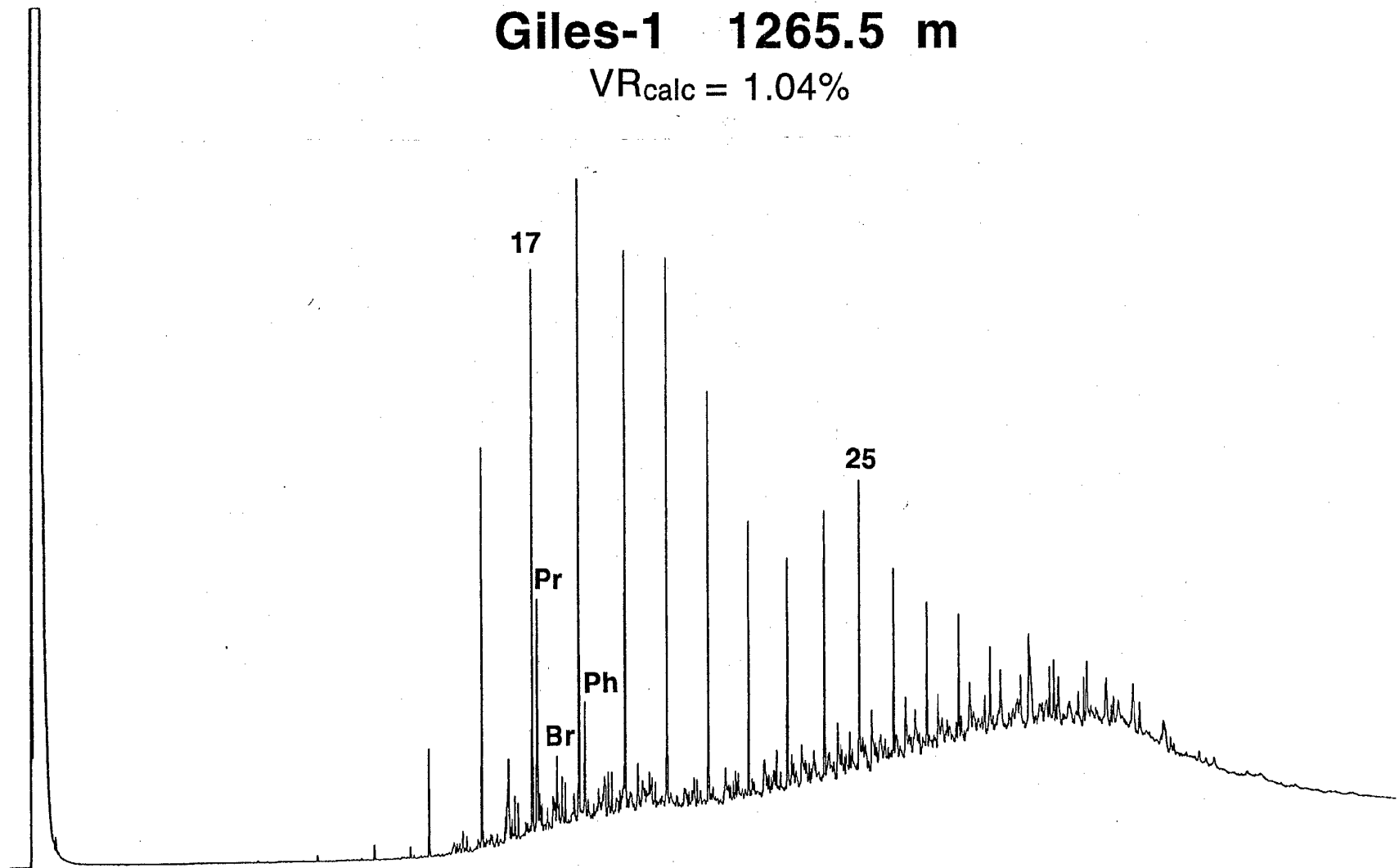


© D. M. McKirdy (1993)

ALINYA FORMATION

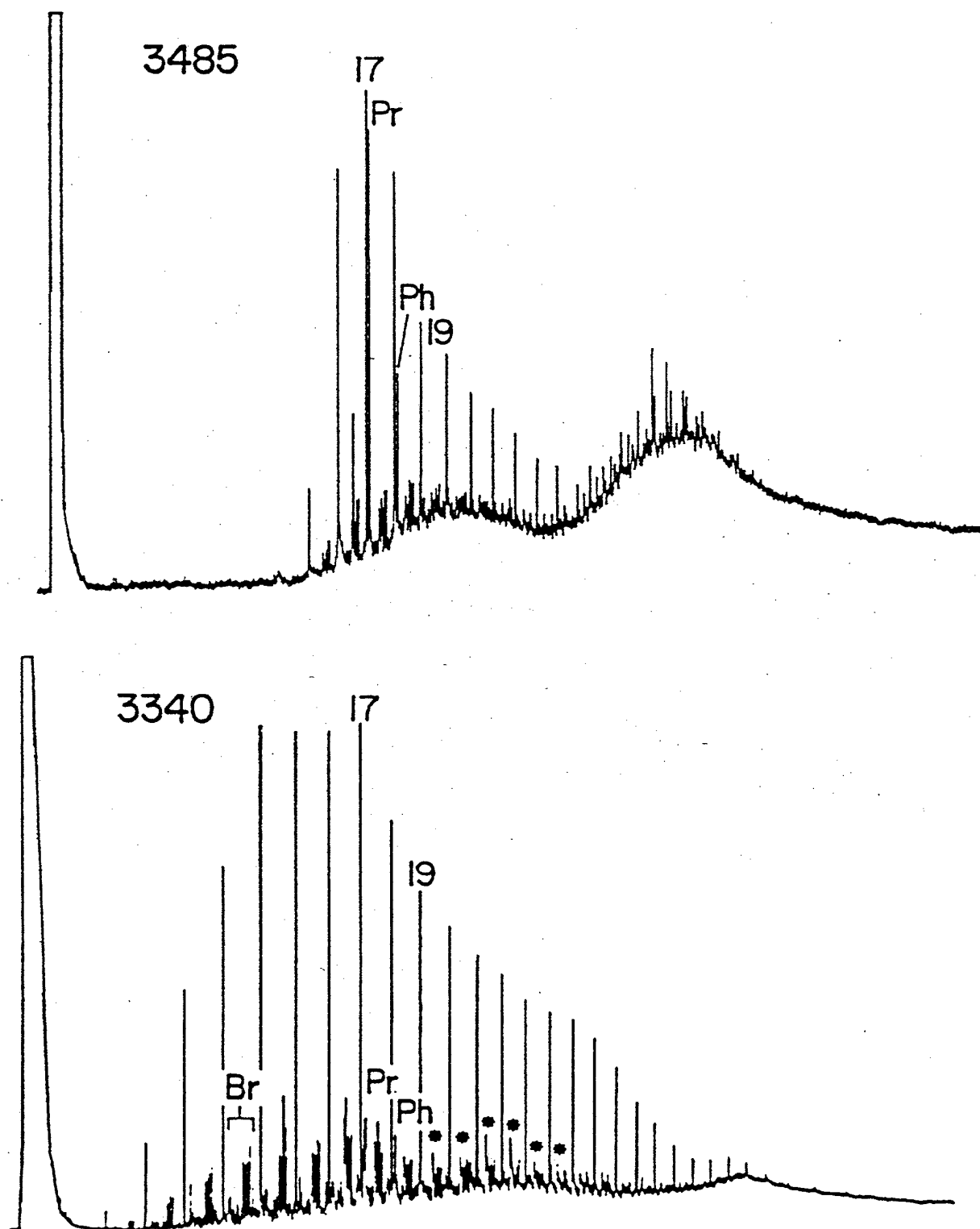
Giles-1 1265.5 m

$VR_{\text{calc}} = 1.04\%$



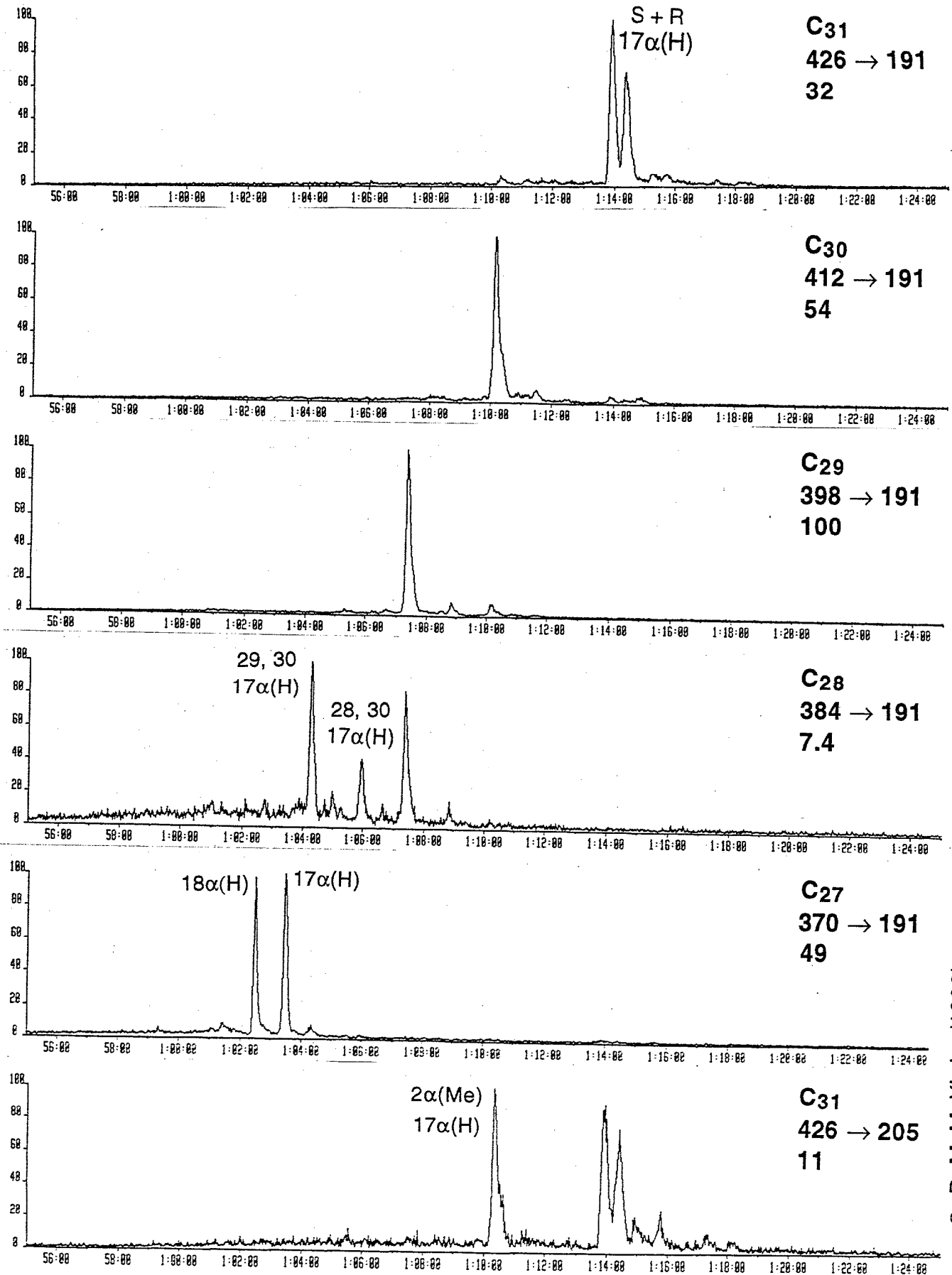
© D. M. McKirdy (1993)

GILLEN MEMBER BITTER SPRINGS FORMATION



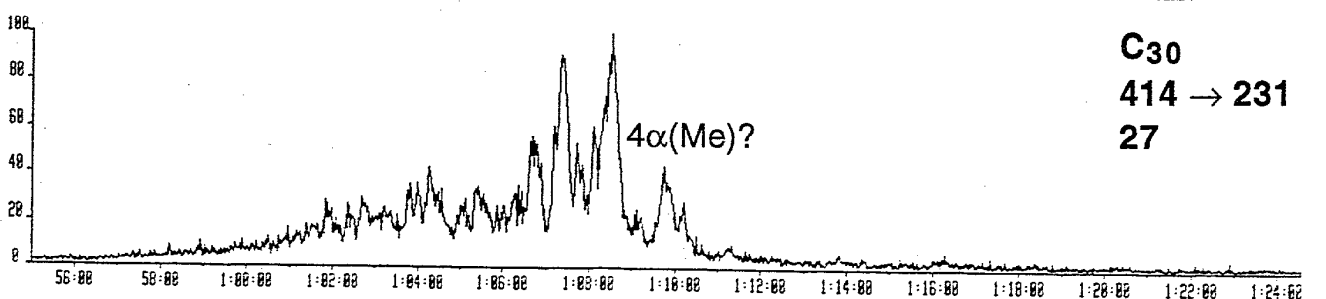
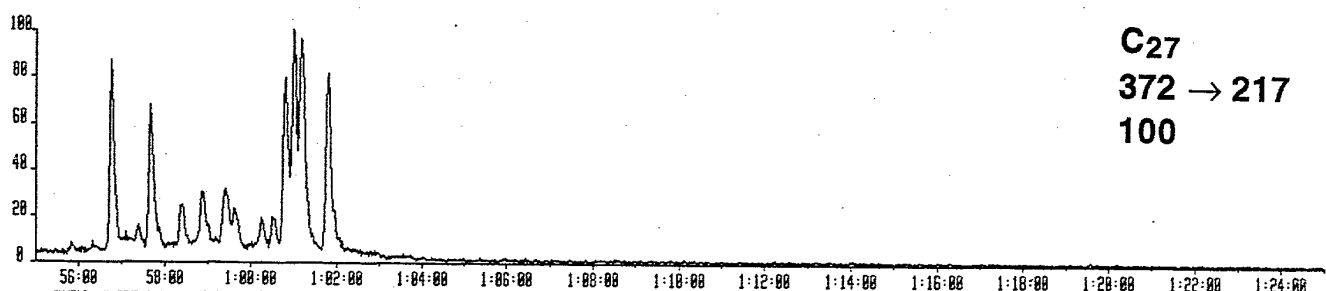
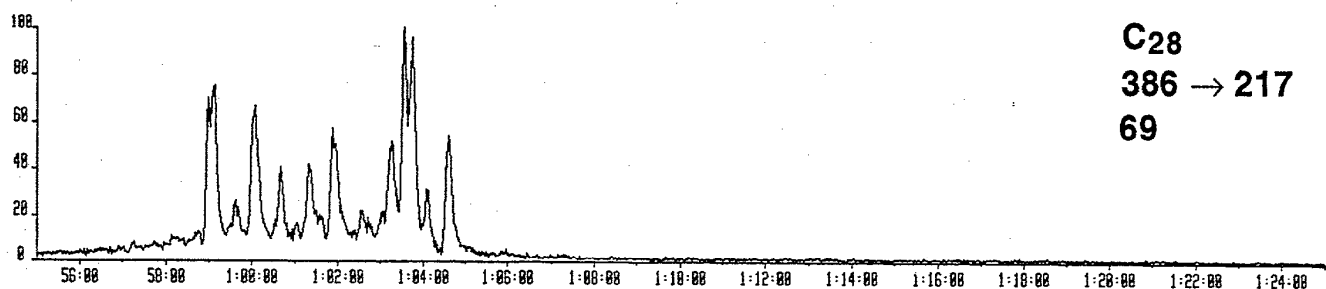
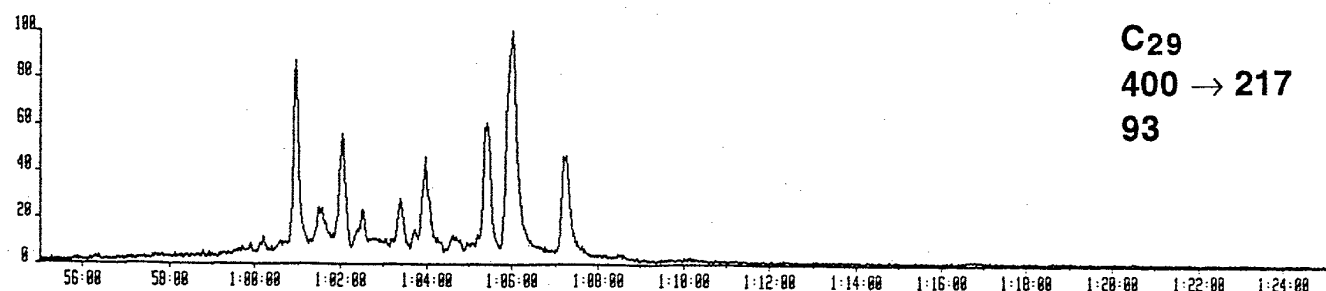
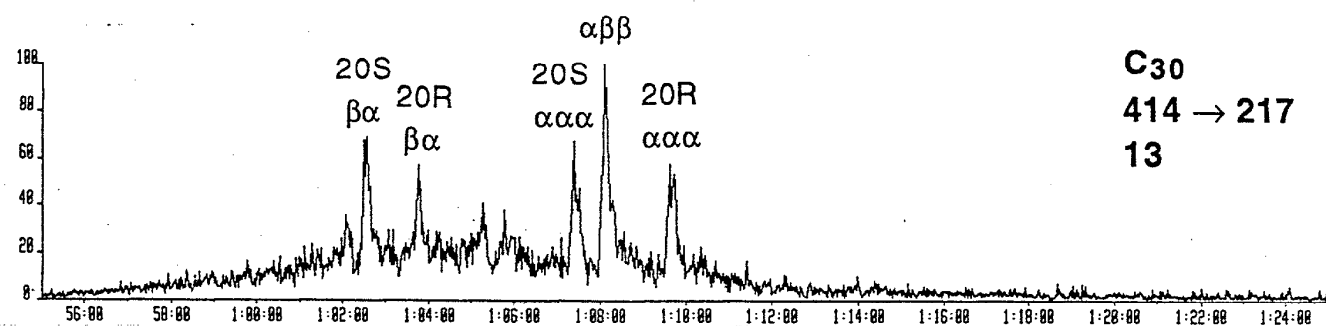
Summons & Walter (1990)

ALINYA FORMATION TRITERPANES

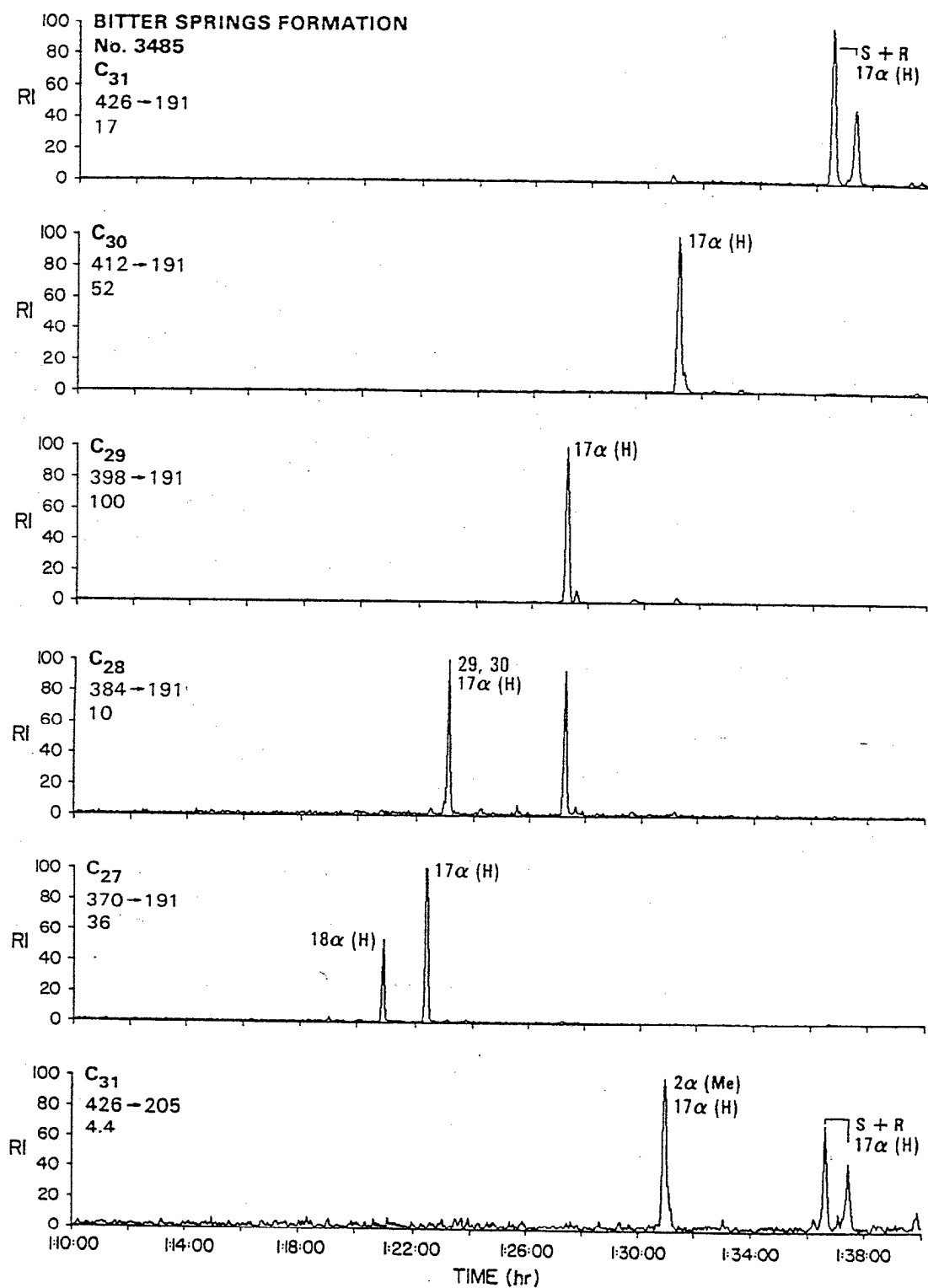


ALINYA FORMATION STERANES

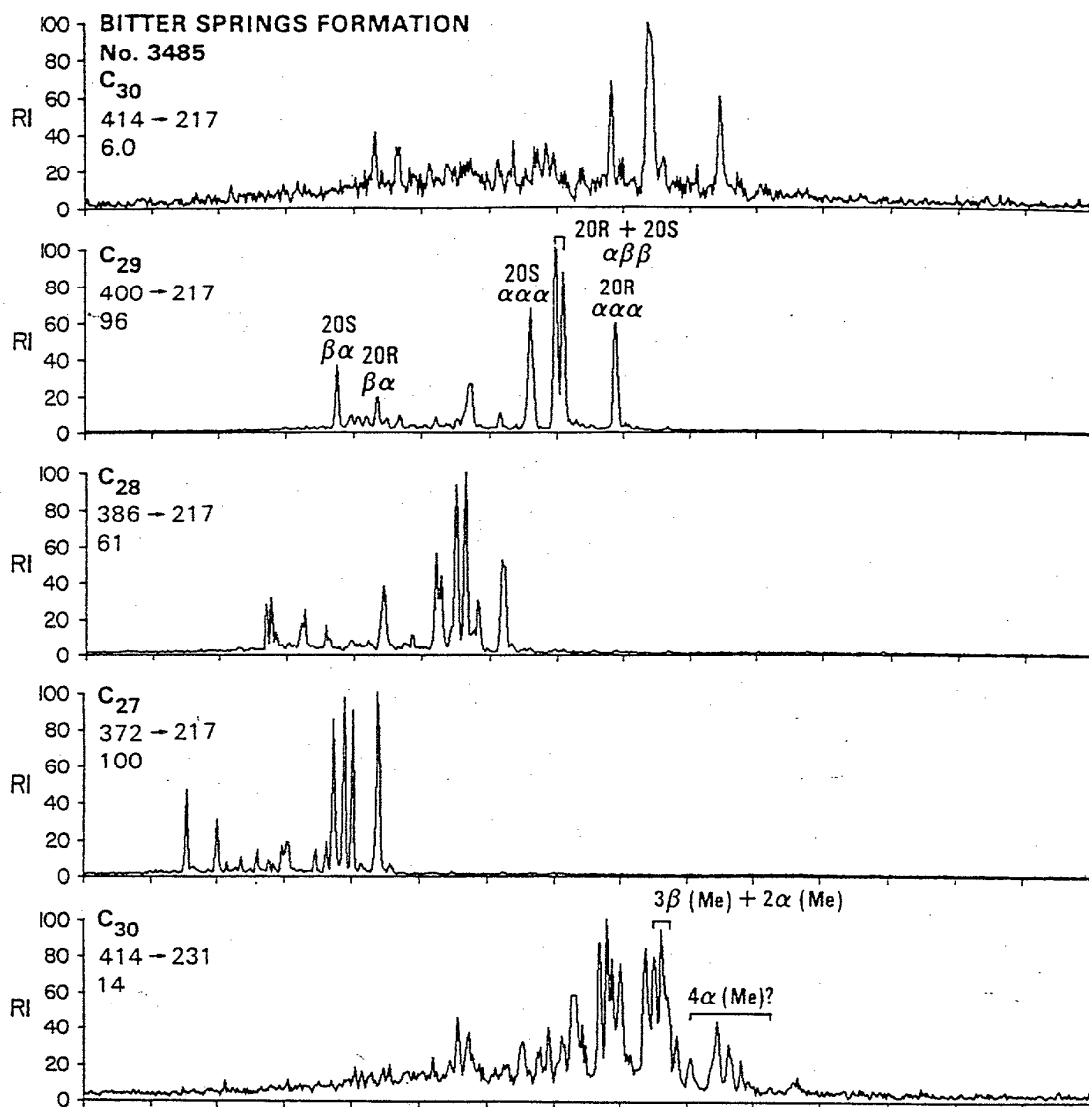
0158



GILLEN MEMBER TRITERPANES



GILLEN MEMBER STERANES



Summons & Walter (1990)

CONCLUSIONS

1. Anhydritic shales from the 35 metre-thick upper Alinya Formation in Giles-1 are organically lean (TOC = 0.1–0.6%).
2. The dispersed organic matter is gas-prone Type III kerogen.
3. Its maturation level corresponds to the oil generation window ($VR_{calc} = 1.0\text{--}1.1\%$).
4. Reservoir facies of the underlying Pindyin Sandstone (5–20% porosity) and overlying Tarlina Sandstone (5–15% porosity) are well placed to receive any hydrocarbons expelled from source beds within the Alinya Formation.
5. Alinya shale extracts contain a diverse suite of molecular fossils derived from eukaryotic algae, cyanobacteria and eubacteria, including
 - methyl-branched alkanes
 - $C_{27}\text{--}C_{35}$ hopanes
 - 2α -methylhopanes
 - $C_{27}\text{--}C_{30}$ steranes
 - C_{30} 4-methylsterane (dinosterane ?)

CONCLUSIONS

6. Specific features of the Alinya biomarker distribution are identical to those reported in anhydritic dolomite of the Gillen Member, Bitter Springs Formation:
 - pristane/phytane = 1.6–2.0
 - 30-norhopane > hopane
 - 2 α -methylhopanes present
 - C₂₇ and C₂₉ steranes co-dominant
 - dinosterane (?) present
 - diasterane/sterane = 0.2–0.6 .
7. Microfossils and molecular fossils provide a consistent basis for the biostratigraphic correlation of the Alinya Formation (Officer Basin) with the lower Bitter Springs Formation (Amadeus Basin).
8. The likely occurrence of dinosterane, a marine dinoflagellate marker, in Proterozoic sediments remains problematical.